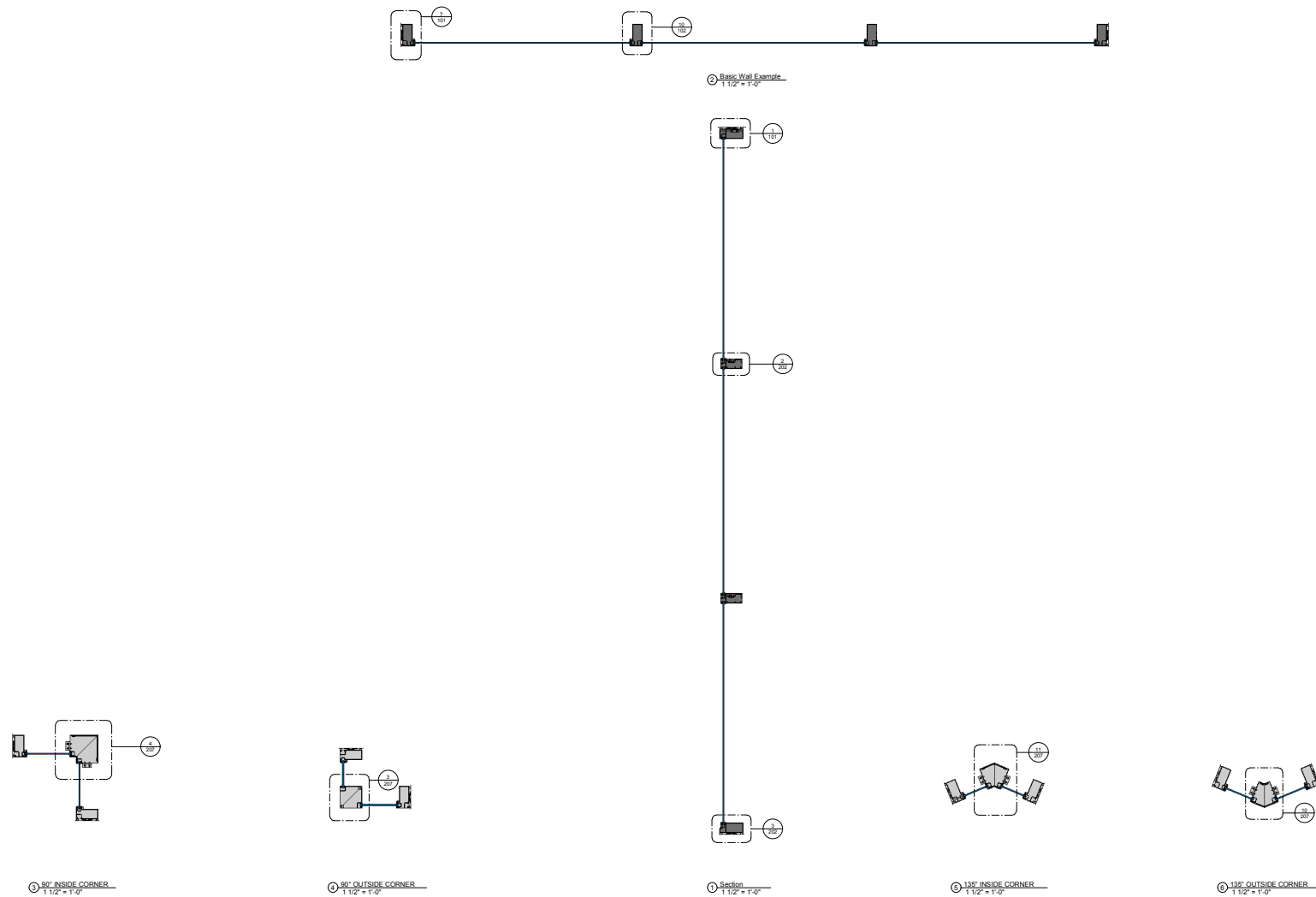


① PRESENTATION

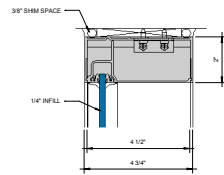
KAWNEER AN ARCONIC COMPANY

555 Guthridge Ct.
Technology Park/Atlanta
Norcross, GA 30092 USA
Tel: +1 770 449 5555

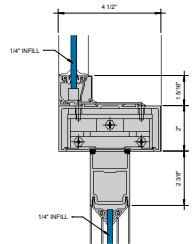


KAWNEER AN ARCONIC COMPANY

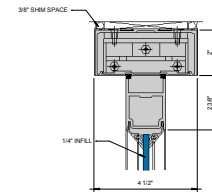
555 Guthridge Ct.
Technology Park/Atlanta
Norcross, GA 30092 USA
Tel: + 1 770 449 5555



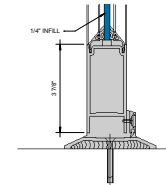
① ENTRANCE TRANSOM HEAD
R² = 1'-0"



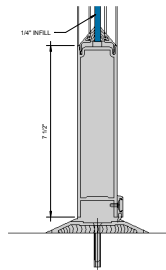
② ENTRANCE TRANSOM BAR-DOUBLE
ACTING CONCEALED CLOSER
R² = 1'-0"



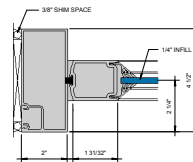
③ ENTRANCE HEADER-DOUBLE ACTING
CONCEALED CLOSER
R² = 1'-0"



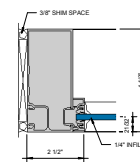
④ ENTRANCE STD BOTTOM RAIL-DOUBLE
ACTING
R² = 1'-0"



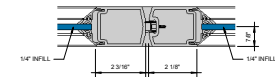
⑤ ENTRANCE OPTIONAL BOTTOM
RAIL-DOUBLE ACTING
R² = 1'-0"



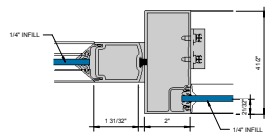
⑥ ENTRANCE DOOR JAMB- DOUBLE
ACTING
R² = 1'-0"



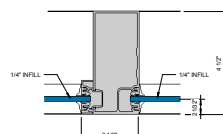
⑦ ENTRANCE DOOR JAMB AT TRANSOM
AREA
R² = 1'-0"



⑧ ENTRANCE MEETING STILES
R² = 1'-0"



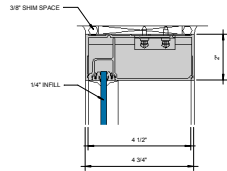
⑨ ENTRANCE DOOR JAMB-DOUBLE
ACTING WITH SIDELITE
R² = 1'-0"



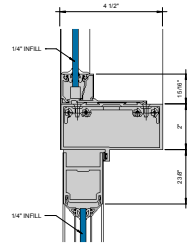
⑩ ENTRANCE DOOR JAMB AT TRANSOM
AREA
R² = 1'-0"

KAWNEER AN ARCONIC COMPANY

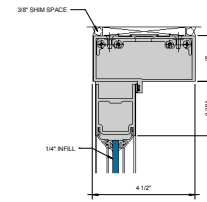
555 Guthridge Ct.
Technology Park/Atlanta
Norcross, GA 30092 USA
Tel: + 1 770 449 5555



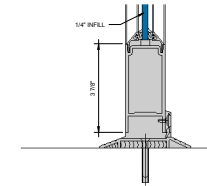
① ENTRANCE TRANSOM HEAD
D' = 1'-0"



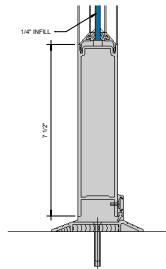
② ENTRANCE TRANSOM BAR-SINGLE
ACTING SURFACE CLOSER
D' = 1'-0"



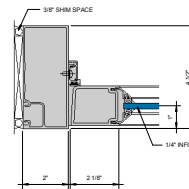
③ ENTRANCE HEADER-SINGLE ACTING
SURFACE CLOSER
D' = 1'-0"



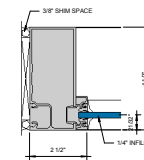
④ ENTRANCE STD BOTTOM RAIL-SINGLE
ACTING
D' = 1'-0"



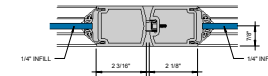
⑤ ENTRANCE OPTIONAL BOTTOM
RAIL-SINGLE ACTING
D' = 1'-0"



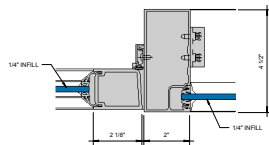
⑥ ENTRANCE DOOR JAMB-SINGLE ACTING
D' = 1'-0"



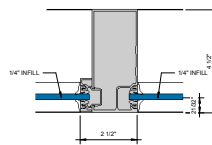
⑦ ENTRANCE DOOR JAMB AT TRANSOM
AREA
D' = 1'-0"



⑧ ENTRANCE MEETING STILES
D' = 1'-0"



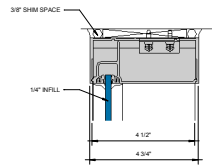
⑨ ENTRANCE DOOR JAMB-SINGLE ACTING
WITH SIDELITE
D' = 1'-0"



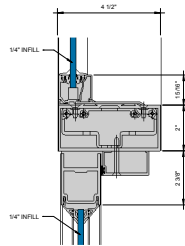
⑩ ENTRANCE DOOR JAMB AT TRANSOM
AREA
D' = 1'-0"

KAWNEER AN ARCONIC COMPANY

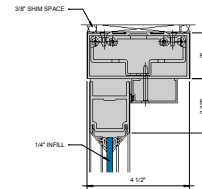
555 Guthridge Ct.
Technology Park/Atlanta
Norcross, GA 30092 USA
Tel: +1 770 449 5555



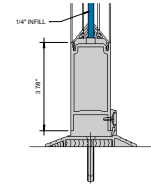
① ENTRANCE TRANSOM HEAD
6\"/>



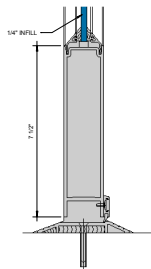
② ENTRANCE TRANSOM BAR SINGLE
ACTING COC
6\"/>



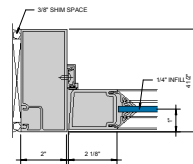
③ ENTRANCE HEADER SINGLE ACTING
COC
6\"/>



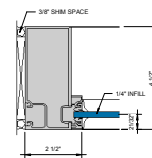
④ ENTRANCE STD. BOTTOM RAIL SINGLE
ACTING
6\"/>



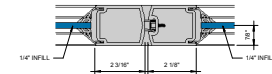
⑤ ENTRANCE OPTIONAL BOTTOM
RAIL SINGLE ACTING
6\"/>



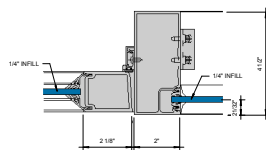
① ENTRANCE DOOR JAMB SINGLE
ACTING
6\"/>



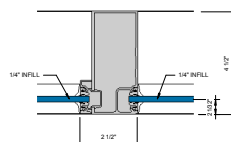
② ENTRANCE DOOR JAMB AT TRANSOM
AREA
6\"/>



③ ENTRANCE MEETING STILES
6\"/>



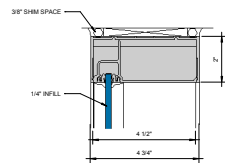
④ ENTRANCE DOOR JAMB SINGLE ACTING
WITH SIDELITE
6\"/>



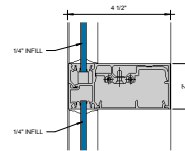
⑤ ENTRANCE DOOR JAMB DOUBLE
ACTING WITH SIDELITE
6\"/>

KAWNEER AN ARCONIC COMPANY

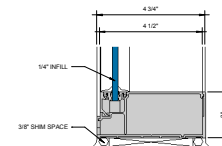
555 Guthridge Ct.
Technology Park/Atlanta
Norcross, GA 30092 USA
Tel: + 1 770 449 5555



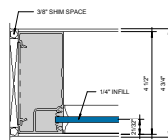
① HEAD
6\"/>



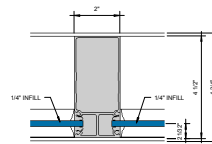
② HORIZONTAL
6\"/>



③ SILL
6\"/>



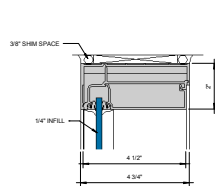
④ JAMB
6\"/>



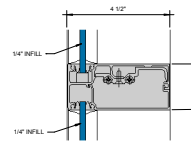
⑤ VERTICAL MULLION
6\"/>

KAWNEER AN ARCONIC COMPANY

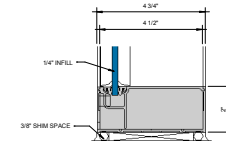
555 Guthridge Ct.
Technology Park/Atlanta
Norcross, GA 30092 USA
Tel: + 1 770 449 5555



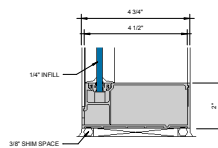
① HEAD
6" = 1'-0"



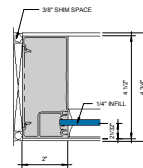
② HORIZONTAL
6" = 1'-0"



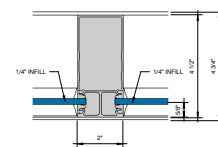
③ SILL
6" = 1'-0"



④ OPTIONAL SILL W/2\"/>



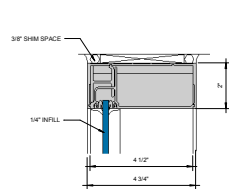
⑤ JAMB
6" = 1'-0"



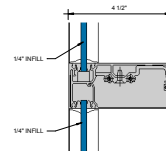
⑥ VERTICAL MULLION
6" = 1'-0"

KAWNEER AN ARCONIC COMPANY

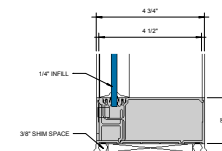
555 Guthridge Ct.
Technology Park/Atlanta
Norcross, GA 30092 USA
Tel: + 1 770 449 5555



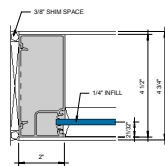
① HEAD
6\" = 1'-0"



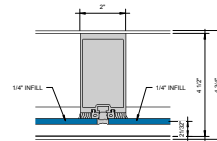
② HORIZONTAL
6\" = 1'-0"



③ SILL
6\" = 1'-0"



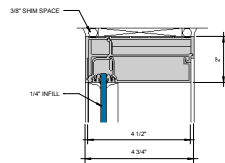
④ JAMB
6\" = 1'-0"



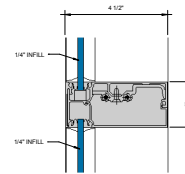
⑤ VERTICAL MULLION
6\" = 1'-0"

KAWNEER AN ARCONIC COMPANY

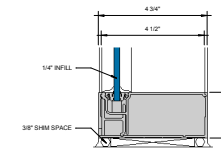
555 Guthridge Ct.
Technology Park/Atlanta
Norcross, GA 30092 USA
Tel: + 1 770 449 5555



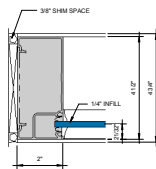
① HEAD
S = 1'-0"



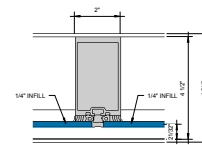
② HORIZONTAL
S = 1'-0"



③ SILL
S = 1'-0"



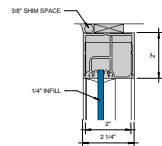
④ JAMB
S = 1'-0"



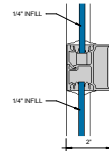
⑤ VERTICAL MULLION
S = 1'-0"

KAWNEER AN ARCONIC COMPANY

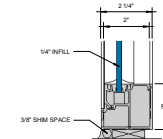
555 Guthridge Ct.
Technology Park/Atlanta
Norcross, GA 30092 USA
Tel: + 1 770 449 5555



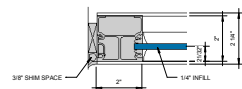
① HEAD
6" = 1'-0"



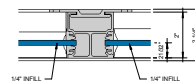
② HORIZONTAL
6" = 1'-0"



③ SILL
6" = 1'-0"



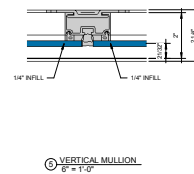
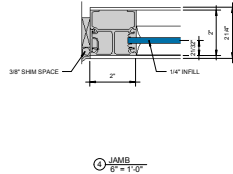
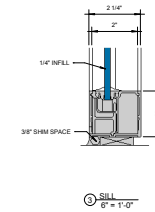
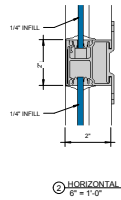
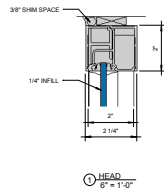
④ JAMB
6" = 1'-0"



⑤ VERTICAL MULLION
6" = 1'-0"

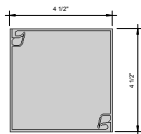
KAWNEER AN ARCONIC COMPANY

555 Guthridge Ct.
Technology Park/Atlanta
Norcross, GA 30092 USA
Tel: + 1 770 449 5555

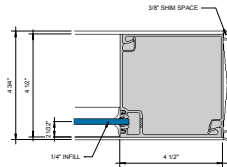


KAWNEER AN ARCONIC COMPANY

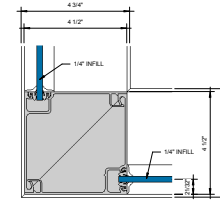
555 Guthridge Ct.
Technology Park/Atlanta
Norcross, GA 30092 USA
Tel: + 1 770 449 5555



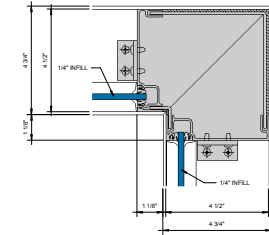
① CORNER POST, NO POCKETS
S" = 1'-0"



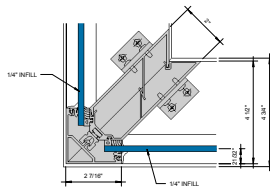
② CORNER POST @ JAMB, ONE POCKET
S" = 1'-0"



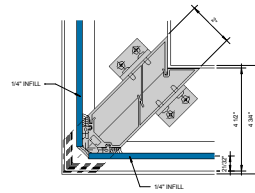
③ 90° OUTSIDE CORNER
S" = 1'-0"



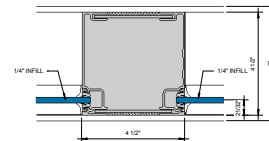
④ 90° INSIDE CORNER
S" = 1'-0"



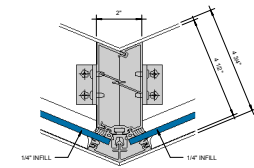
⑤ 90° CAPTURED OUTSIDE DART CORNER
S" = 1'-0"



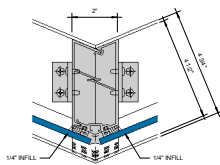
⑥ 90° SSG OUTSIDE DART CORNER
S" = 1'-0"



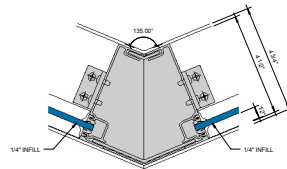
⑦ CORNER POST TWO POCKETS
S" = 1'-0"



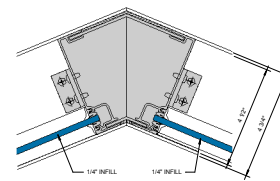
⑧ 135° CAPTURED OUTSIDE DART CORNER
S" = 1'-0"



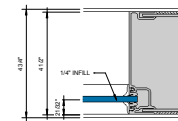
⑨ 135° SSG OUTSIDE DART CORNER
S" = 1'-0"



⑩ 135° OUTSIDE CORNER
S" = 1'-0"



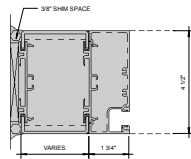
⑪ 135° INSIDE CORNER
S" = 1'-0"



⑫ VARIABLE DEGREE CORNER WITH BRONZE METAL
S" = 1'-0"

KAWNEER AN ARCONIC COMPANY

555 Guthridge Ct.
Technology Park/Atlanta
Norcross, GA 30092 USA
Tel: +1 770 449 5555



① BRAKE METAL ADAPTER @ JAMB
6" ± 1/8"